



Titre du document

Tâche 1.3 Veille des référentiels d'interfaçage

Livrable : Tâche 1.3.1 : Inventaire des composants modifiés et des messages nouveaux pour alimenter la base des référentiels

Objet du document

Veille des référentiels d'interfaçage – Inventaire des composants modifiés et des messages nouveaux pour alimenter la base des référentiels

Ce livrable a pour vocation le suivi des publications régulières de normes en vue d'adapter les connecteurs de récupération des référentiels et de modifier éventuellement l'architecture de la base des composants de référentiels.

Il sera réactualisé tous les 6 mois avec les mises à jour proposées et validées par l'UN/CEFACT.

Pour la bonne compréhension de ce document, référence est faite au livrable T 1 2 1_Etat de l'art_Cadre Normatif_V1.

Informations sur le document

Responsable	Référence	Description	Date livraison
TTP-NF	T.1.3.1	Version 1.0	16/09/2013
TTP-NF	T.1.3.1	Version 2.0	16/10/2013
AD'MISSIONS	T.1.3.1	Version 3.0	04/11/2013

Veille UN/EDIFACT

Le présent livrable a pour vocation de suivre les évolutions normatives des messages d'échanges de données. Il s'appuiera sur les mises à jour proposées par l'UN/CEFACT et nous détaillerons ici les évolutions tous les 6 mois des messages utiles à NOSCIFeL.

Par ailleurs les travaux sur la constitution d'un sous-groupe de la norme Core Components Multi Modal Transport feront l'objet d'un suivi dès leur publication.

Ces messages EDIFACT sont décrits dans les annexes 4 et 5 du Rapport d'étude des besoins (L.1.1.1) et sont :

- IFTSAI / BERMAN
- IFTSTA
- BAPLIE
- IFCSUM / EDIMAN
- CUSRES
- COPINO
- IFTMIN
- IFTMBF
- IFTMBC
- COPARN
- CUSCAR ?
- CUSDEC ?

L'UNECE, la Commission Economique pour l'Europe des Nations Unies, tient régulièrement à jour sur son site internet les évolutions des messages UN/EDIFACT.

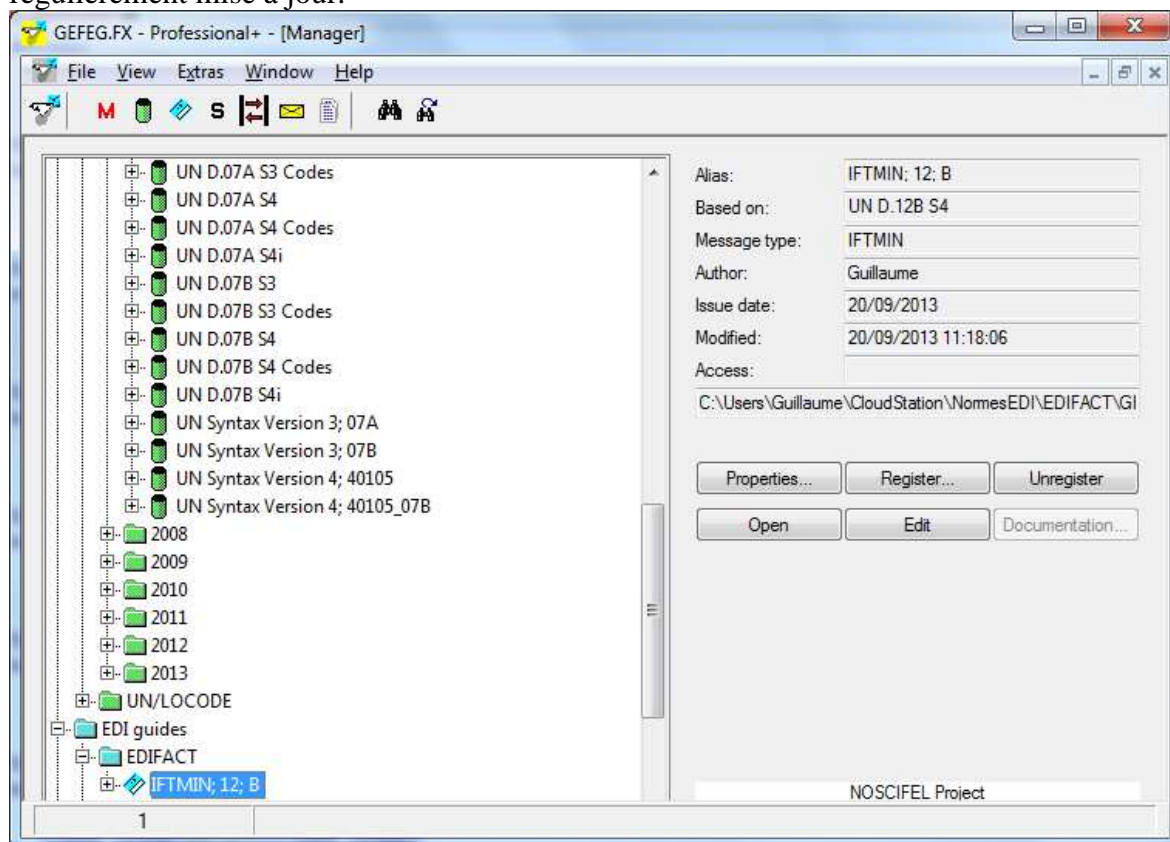
Ainsi, nous pouvons trouver à l'adresse suivante toutes les évolutions (voir annexe) : <http://www.unece.org/fileadmin/DAM/trade/untidd/d13a/trmd/trmdi1.htm>

Nous ferons une mise à jour tous les 6 mois.

Outil de GEFEG

Afin d'implémenter les référentiels normatifs, TTP a fait l'acquisition de l'outil GEFEG.FX Professional+, de l'éditeur GEFEG. Ce logiciel, unique en son genre, est largement utilisé par des groupes de travail de l'UN/CEFACT ainsi que des organisations telles qu'IATA - Organisation Internationale des Transports Aériens, GS1 et le WCO/OMD - Organisation Mondiale des Douanes.

GEFEG peut être utilisé pour créer des structures de messages, pour éditer des structures officielles, extraire ces messages dans différents formats. Il sera donc la base d'extraction principale des messages utilisés par les différents services de NOSCIFEL. La base GEFEG est régulièrement mise à jour.



GEFEG.FX - Professional+ - [List of message types - UN D.12B S4]

File Edit View Cross-reference Reports EDI standard Extras Window Help

Chg	MT	S	Rev	Name
	ICSOLI		2	Insurance claim solicitor's instruction message
	IFCSUM		16	Forwarding and consolidation summary message
	IFTCCA		4	Forwarding and transport shipment charge calculation message
	IFTDGN		8	Dangerous goods notification message
	IFTFCC		3	International transport freight costs and other charges message
	IFTICL		1	Cargo insurance claims message
	IFTMAN		11	Arrival notice message
	IFTMBC		10	Booking confirmation message
	IFTMBF		12	Firm booking message
	IFTMBP		10	Provisional booking message
	IFTMCA		3	Consignment advice message
	IFTMCS		12	Instruction contract status message
	IFTMIN		16	Instruction message
	IFTRIN		4	Forwarding and transport rate information message
	IFTSAI		10	Forwarding and transport schedule and availability information message

1. SCOPE
 This paper provides the definition of the Instruction Message to be used in fulfilling the requirements of trading partners in the transport chain worldwide, in the interchange of cargo and transport related information using Electronic Data Interchange (EDI).
 This message is a single consignment based message, being aligned with other single consignment based messages such as

English F 97/197 View

Annexe

United Nations Directories
 for Electronic Data Interchange for
 Administration, Commerce and Transport



UN/EDIFACT

PART 5 UNITED NATIONS DIRECTORIES FOR ELECTRONIC DATA INTERCHANGE
 FOR ADMINISTRATION, COMMERCE AND TRANSPORT

CHAPTER 2 Message type directory EDMD

1. Indexes

1.1 Index of message types by code

Change indicators

- a plus sign (+) for an addition
- an asterisk (*) for an amendment to structure
- a vertical bar (|) for changes to text for descriptions, notes and functions
- a letter X (X) for marked for deletion
- a letter R (R) for a message whose structure has been completely recast. No other change symbols shall be used with these messages

Code	Name	Rev	Recast
APERAK	Application error and acknowledgement message	4	
AUTHOR	Authorization message	3	
BALANC	Balance message	2	
BANSTA	Banking status message	5	
BAPLIE	Bayplan/stowage plan occupied and empty locations message	7	R
BERMAN	Berth management message	4	
BMISRM	Bulk marine inspection summary report message	2	
BOPBNK	Bank transactions and portfolio transactions report message	3	
BOPCUS	Balance of payment customer transaction report message	2	
BOPDIR	Direct balance of payment declaration message	3	
BOPINF	Balance of payment information from customer message	3	
BUSCRD	Business credit report message	2	
CALINF	Vessel call information message	4	
CASINT	Request for legal administration action in civil proceedings message	2	
CASRES	Legal administration response in civil proceedings message	2	
CHACCO	Chart of accounts message	3	
CLASET	Classification information set message	1	
CNTCND	Contractual conditions message	3	
COACSU	Commercial account summary message	3	
COARRI	Container discharge/loading report message	9	
CODECO	Container gate-in/gate-out report message	10	
CODENO	Permit expiration/clearance ready notice message	8	
COEDOR	Transport equipment stock and profile report message	10	
COHAOR	Container special handling order message	10	
COLREQ	Request for a documentary collection message	2	
COMDIS	Commercial dispute message	2	
CONAPW	Advice on pending works message	1	
CONDPV	Direct payment valuation message	3	
CONDRA	Drawing administration message	4	
CONDRO	Drawing organisation message	2	
CONEST	Establishment of contract message	5	
CONITT	Invitation to tender message	5	
CONPVA	Payment valuation message	4	
CONQVA	Quantity valuation message	2	

CONRPW	Response of pending works message	1	
CONTEN	Tender message	5	
CONWQD	Work item quantity determination message	2	
COPARN	Container announcement message	10	
COPAYM	Contributions for payment	2	
COPINO	Container pre-notification message	11	
COPRAR	Container discharge/loading order message	8	
COREOR	Container release order message	12	
COSTCO	Container stuffing/stripping confirmation message	8	
COSTOR	Container stuffing/stripping order message	8	
CREADV	Credit advice message	3	
CREEXT	Extended credit advice message	3	
CREMUL	Multiple credit advice message	4	
CUSCAR	Customs cargo report message	11	
CUSDEC	Customs declaration message	12	
CUSEXP	Customs express consignment declaration message	3	
CUSPED	Periodic customs declaration message	3	
CUSREP	Customs conveyance report message	8	
CUSRES	Customs response message	9	
DAPLOS	Data Plot Sheet	1	
DEBADV	Debit advice message	3	
DEBMUL	Multiple debit advice message	3	
DEBREC	Debts recovery message	2	
DELFOR	Delivery schedule message	9	
* DELJIT	Delivery just in time message	10	
DESADV	Despatch advice message	14	
DESTIM	Equipment damage and repair estimate message	5	
DGRECA	Dangerous goods recapitulation message	1	
DIRDEB	Direct debit message	6	
DIRDEF	Directory definition message	6	
DMRDEF	Data maintenance request definition message	2	
DMSTAT	Data maintenance status report/query message	2	
DOCADV	Documentary credit advice message	4	
DOCAMA	Advice of an amendment of a documentary credit message	2	
DOCAMI	Documentary credit amendment information message	2	
DOCAMR	Request for an amendment of a documentary credit message	2	
DOCAPP	Documentary credit application message	4	
DOCARE	Response to an amendment of a documentary credit message	2	
DOCINF	Documentary credit issuance information message	4	
ENTREC	Accounting entries message	2	
FINCAN	Financial cancellation message	1	
FINPAY	Multiple interbank funds transfer message	2	
FINSTA	Financial statement of an account message	1	
GENRAL	General purpose message	3	
GESMES	Generic statistical message	3	
GOVCBR	Government Cross Border Regulatory message	4	R
HANMOV	Cargo/goods handling and movement message	7	
ICASRP	Insurance claim assessment and reporting message	2	
ICSOLI	Insurance claim solicitor's instruction message	2	
IFCSUM	Forwarding and consolidation summary message	16	
IFTCCA	Forwarding and transport shipment charge calculation message	4	
IFTDGN	Dangerous goods notification message	8	
IFTFCC	International transport freight costs and other charges message	3	
IFTICL	Cargo insurance claims message	1	
IFTMAN	Arrival notice message	11	

IFTMBC	Booking confirmation message	10
IFTMBF	Firm booking message	12
IFTMBP	Provisional booking message	10
IFTMCA	Consignment advice message	3
IFTMCS	Instruction contract status message	12
IFTMIN	Instruction message	16
IFTRIN	Forwarding and transport rate information message	4
IFTSAI	Forwarding and transport schedule and availability information message	10
* IFTSTA	International multimodal status report message	17
IFTSTQ	International multimodal status request message	4
IMPDEF	EDI implementation guide definition message	2
INFCON	Infrastructure condition message	1
INFENT	Enterprise accounting information message	2
INSDDES	Instruction to despatch message	3
INSPRE	Insurance premium message	1
INSREQ	Inspection request message	2
INSRPT	Inspection report message	3
* INVOIC	Invoice message	16
INVRPT	Inventory report message	9
IPPOAD	Insurance policy administration message	1
IPPOMO	Motor insurance policy message	2
ISENDS	Intermediary system enablement or disablement message	2
ITRRPT	In transit report detail message	4
JAPRES	Job application result message	2
JINFDE	Job information demand message	2
JOBAPP	Job application proposal message	2
JOBCON	Job order confirmation message	2
JOBMOD	Job order modification message	2
JOBOFF	Job order message	2
JUPREQ	Justified payment request message	4
LEDGER	Ledger message	1
LREACT	Life reinsurance activity message	2
LRECLM	Life reinsurance claims message	2
MEDPID	Person identification message	2
MEDPRE	Medical prescription message	2
MEDREQ	Medical service request message	2
MEDRPT	Medical service report message	2
MEDRUC	Medical resource usage and cost message	3
MEQPOS	Means of transport and equipment position message	3
MOVINS	Stowage instruction message	4
MSCONS	Metered services consumption report message	2
ORDCHG	Purchase order change request message	15
ORDERS	Purchase order message	16
ORDRSP	Purchase order response message	17
OSTENQ	Order status enquiry message	4
OSTRPT	Order status report message	4
PARTIN	Party information message	7
PAXLST	Passenger list message	9
PAYDUC	Payroll deductions advice message	4
PAYEXT	Extended payment order message	3
PAYMUL	Multiple payment order message	5
PAYORD	Payment order message	3
PRICAT	Price/sales catalogue message	15
PRIHIS	Pricing history message	3
PROCST	Project cost reporting message	1
PRODAT	Product data message	8
PRODEX	Product exchange reconciliation message	4

PROINQ	Product inquiry message	2
PROSRV	Product service message	1
PROTAP	Project tasks planning message	3
PRPAID	Insurance premium payment message	3
QUALITY	Quality data message	5
QUOTES	Quote message	10
RDRMES	Raw data reporting message	2
REBORD	Reinsurance bordereau message	3
RECADV	Receiving advice message	9
RECALC	Reinsurance calculation message	2
RECECO	Credit risk cover message	2
RECLAM	Reinsurance claims message	3
RECORD	Reinsurance core data message	1
REGENT	Registration of enterprise message	1
RELIST	Reinsured objects list message	1
REMADV	Remittance advice message	13
REPREM	Reinsurance premium message	2
REQDOC	Request for document message	4
REQOTE	Request for quote message	9
RESETT	Reinsurance settlement message	3
RESMSG	Reservation message	2
RETACC	Reinsurance technical account message	3
RETANN	Announcement for returns message	4
RETINS	Instruction for returns message	2
RPCALL	Repair call message	1
SAFHAZ	Safety and hazard data message	3
SANCRT	International movement of goods governmental regulatory message	5
SLSFCT	Sales forecast message	2
SLSRPT	Sales data report message	9
SOCADE	Social administration message	2
SSIMOD	Modification of identity details message	2
SSRECH	Worker's insurance history message	2
SSREGW	Notification of registration of a worker message	2
STATAC	Statement of account message	4
STLRPT	Settlement transaction reporting message	2
SUPCOT	Superannuation contributions advice message	2
SUPMAN	Superannuation maintenance message	2
SUPRES	Supplier response message	2
TANSTA	Tank status report message	1
TAXCON	Tax control message	1
TPFREP	Terminal performance message	3
UTILMD	Utilities master data message	6
UTILTS	Utilities time series message	5
VATDEC	Value added tax message	3
VESDEP	Vessel departure message	4
WASDIS	Waste disposal information message	4
WKGRDC	Work grant decision message	2
WKGRRE	Work grant request message	2

Copyright United Nations, all rights reserved

UN Economic Commission for Europe
Palais des Nations, CH-1211 Geneva 10, Switzerland
Tel: +41-22 917 2773 Fax: +41-22 917 0037 E-mail: TradeMaster@unece.org